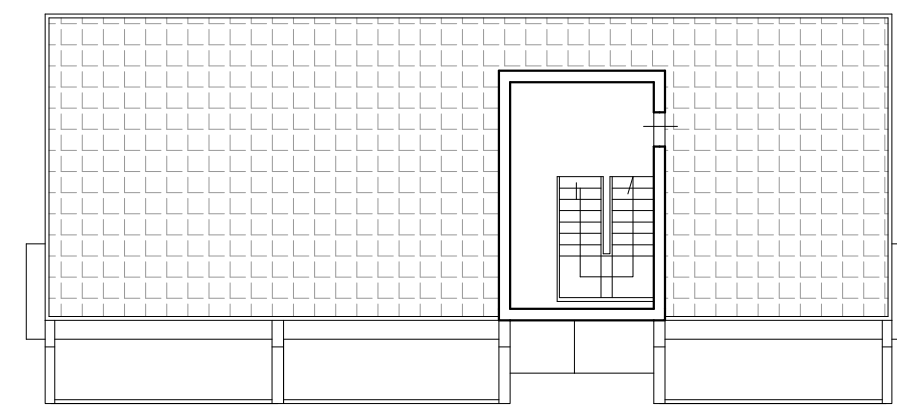
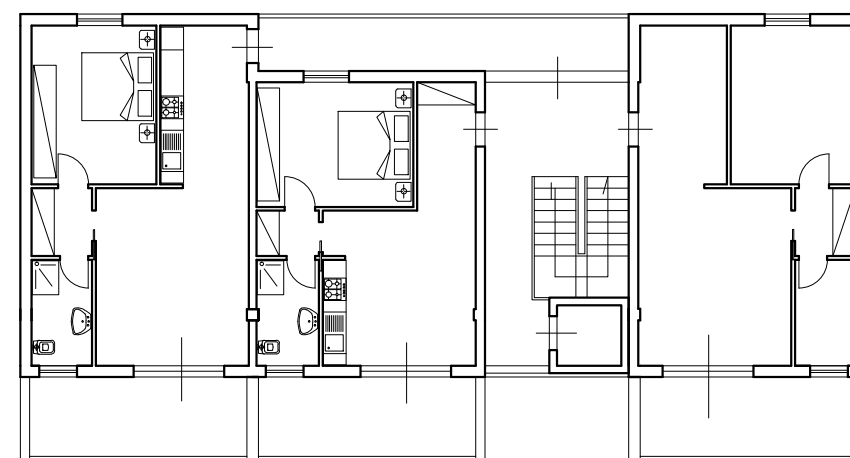


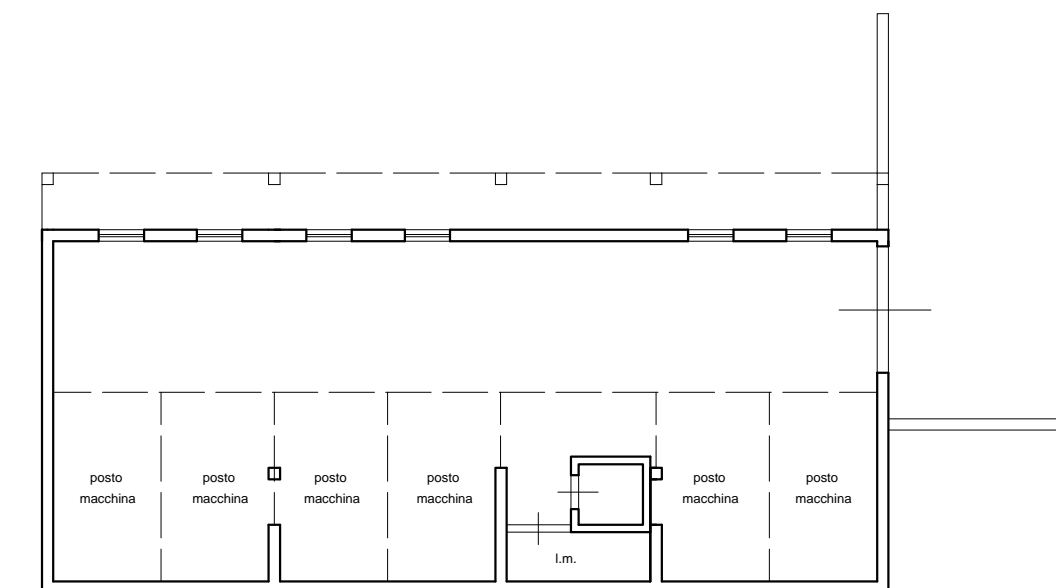
Prospecto laterale



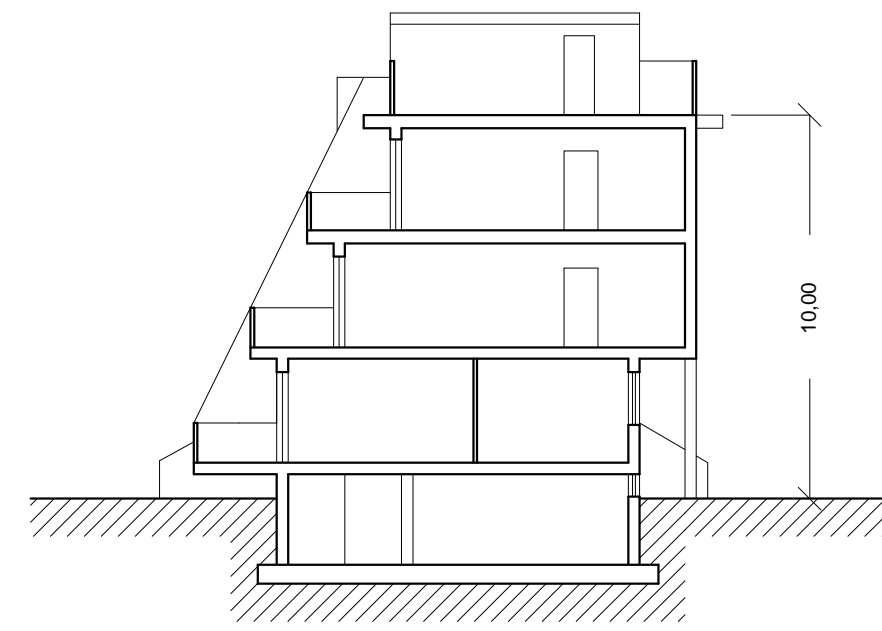
P. Copertura



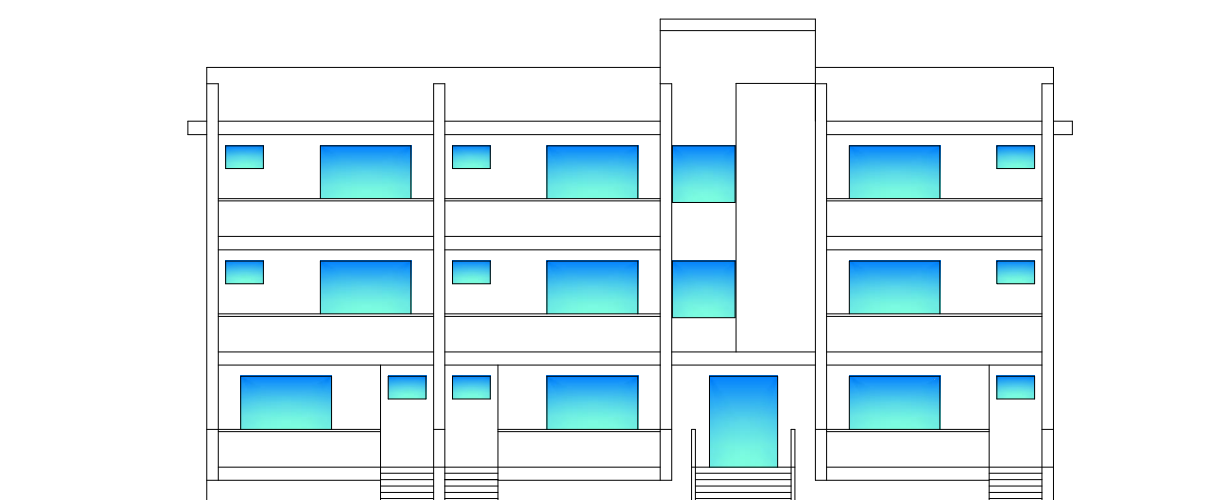
P. Primo



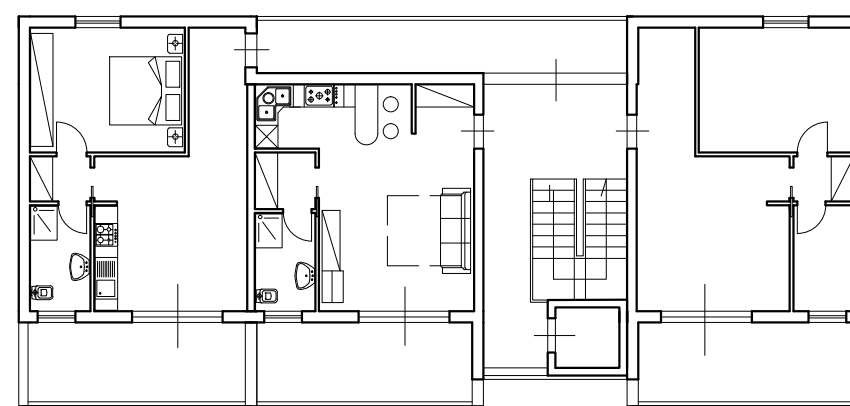
P. Seminterrato



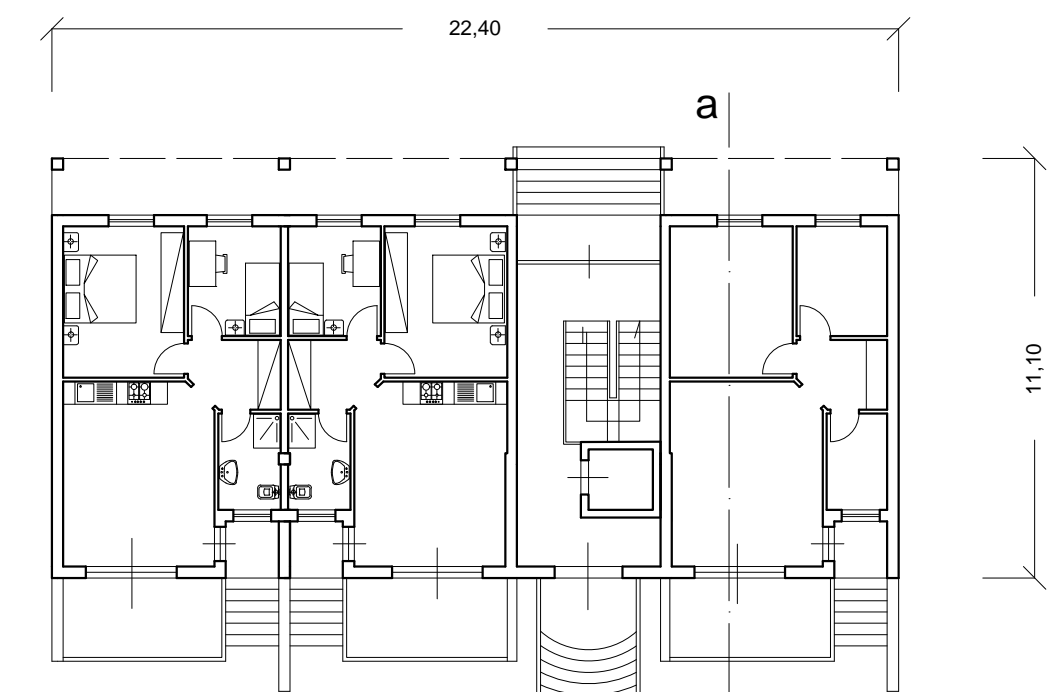
•^: q } ^ A C C C
solare



Prospecto frontale



P. Secondo



P. Rialzato

STUDIO DI PROGETTAZIONE

Comune di:
Roseto degli Abruzzi
Provincia di: **TERAMO**

OGGETTO: *Piano di Lottizzazione di iniziativa privata*

UBICAZIONE: *Lungomare Trieste*

COMMITTENTE: *Tacconelli Pasquale*

ELABORATI: *Tipologia edilizia*

Il Tecnico progettista: Arch. Di Emidio Bruno

TAVOLA: **5** SCALA: **1:200** DATA:

Arch. Di Emidio Bruno
via S. Spaventa n. 46 - Roseto degli Abruzzi (TE)
Tel. e fax: 085/8999172 - brunodiemidio@virgilio.it